

JAYPEE UNIVERSITY OF INFORMATION TECHNOLOGY, WAKNAGHAT

TEST -2 EXAMINATIONS - 2022

B. Tech-III Semester (BI)

MAX. MARKS: 25

COURSE CODE (CREDITS): 18B11BI312

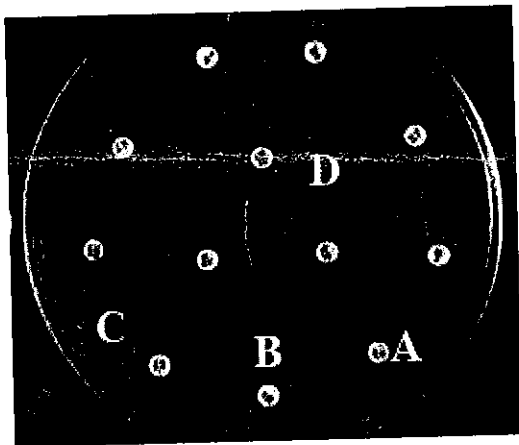
COURSE NAME: MICROBIOLOGY & IMMUNE SYSTEM

COURSE INSTRUCTORS: Dr. Rahul Shrivastava

MAX. TIME: 1 Hour and 30 Minutes

*Note: All questions are compulsory. Marks are indicated against each question in square brackets.*

Q1. In an 'antibiotic susceptibility assay' against pathogenic bacteria, different antibiotics showed varied levels of susceptibility. With reference to the figure provided answer the following: (CO-II) [2+2+1 = 5]



- Compare the order of susceptibility of antibiotics A, B, C, and D against the pathogen providing suitable reason for your order.
- Elaborate the method employed.
- Illustrate application of the assay in diagnostics and therapeutics.

Q2. Give reasons FOR or AGAINST the following statement. (CO-III) [1 X 5 = 5]

- Human Pathogenic bacteria are mostly 'Mesophilic' in nature.
- High concentration of salt in pickles increases its shelf life.
- 95% ethyl alcohol is a better antibacterial agent than 75% ethyl alcohol.
- Fungi are usually responsible for spoilage of acidic foods.
- Pasteurization is used extensively in the beverage industry as it kills 100% of the microorganisms.

Q3. Compare the 'Lytic' and 'Lysogenic' cycle of viral multiplication with suitable diagrams. (CO-II) [5]

Q4. Calculate the average number of bacteria present in soil from the following data, 100µl of sample was used for plating each time: (CO-V) [4]

Sample No.	Dilution Factor	CFU	Sample No.	Dilution Factor	CFU
Sample 1	-4	48, 60	Sample 3	-8	126, 228
Sample 2	-6	54, 78	Sample 4	-10	0, 2

Q5. Differentiate between an obligate and a facultative aerobe. Name the enzymes most likely to be present in an obligate aerobe and function of the enzymes. (CO-I) [3]

Q6. What is meant by 'indirect' measurement of microbial growth? Elaborate any two methods used for indirect growth measurement of bacteria. (CO-I) [3]